

Nursery Journey



Autumn



Chronology - The history of us. Birth to nursery - how we have changed?

Enquiry - How does our outdoor area change with the seasons.

Compare and contrast – Who is in our home/ who do we live with?

Compare and contrast – Compare and contrast family traditions at Christmas time with our peers.



Spring



Enquiry – How has our school environment changed since the beginning of nursery?

Compare and contrast - Compare the lives of the Inuit community with our own.

Chronology/compare and contrast - Our sunflower planting journey. How have seeds changed over time?



Summer



Chronology – being able to retell a story from the beginning to the end, sequencing key events.

Chronology - travelling over water - how travel over water has evolved.

Reception Journey



Chronology - simple family tree and who is involved in their families

The Photo by Photo Author is licensed under CC BY-SA

Compare and contrast - similarities and differences between themselves and other children

Compare and contrast - images of Featherstone past and present.



Chronology - Children's life cycle so far.

Chronology/compare and contrast - Our broad bean planting journey. How have beans changed over time?



Chronology - how the postal service has changed over time. Simple timeline of changes. Linked to core text, 'The Jolly Postman'.

Enquiry - the journey from 'post box to letter box'.

Autumn



Chronology/enquiry - how Christmas has evolved over time

Compare and Contrast - How is Christmas celebrated all over the world? Simple comparisons of traditions.

Enquiry - Why do Christians celebrate Christmas?



Spring

Cause and effect/ Chronology/ Enquiry - significant individual - the voyage of Ernest Shackleton.

Summer



Enquiry - significant individual - Amelia Earhart and her achievement of being the first woman to fly solo across the Atlantic Ocean.

Chronology - timeline of Amelia's achievements.

Year 1 Journey



Autumn



Changes within living memory

Enquiry question: How has childhood changed over the years?



Spring



Significant Individuals

Enquiry question: How did these significant people make a change in the world?



Summer



Events beyond living memory

Enquiry question: Why do we still remember the Great Fire of London?

Year 2 Journey



Autumn

Significant historical people, places and events

Enquiry question: Why was Pontefract Castle important?



Spring

Significant Individuals

Enquiry question: Why are the journeys of these significant explorers remembered today?



Summer

Changes within living memory

Enquiry question: How have seaside holidays changed over time?



Year 3 Journey



Autumn

Changes in Britain from the Stone Age to the Iron Age

Enquiry question: What was new about the New Stone Age?



Spring

Changes in Britain from the Stone Age to the Iron Age

Enquiry question: What can archaeological evidence tell us about Iron Age Britain?



Summer

The Roman Empire and its impact on Britain

Enquiry question: What impact did the Roman Empire have on Britain?



Year 4 Journey



Autumn



Britain's settlement by Anglo-Saxons and Scots

Enquiry question: How do we know about the Anglo-Saxons in Britain?



Spring



The Viking and Anglo-Saxon struggle for the Kingdom of England

Enquiry question: Why did the Vikings choose to settle in Britain?



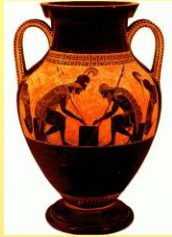
Summer



The achievements of the earliest civilisations

Enquiry question: What made Ancient Egypt a great civilisation?

Year 5 Journey



Autumn

Ancient Greece

Enquiry question: How did the Ancient Greeks influence the Western World?



Spring

Local History Study

Enquiry question: How has Featherstone changed over time?



Summer

Local History Study

Enquiry question: What impact did World War II have on Featherstone (and West Yorkshire)?



Year 6 Journey



Autumn



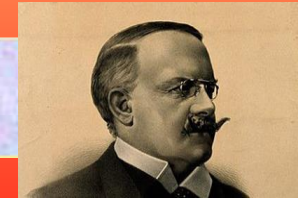
Non-European Society

Enquiry question: Why were the Maya a successful civilisation?

Spring



Summer



Aspect in British History

Enquiry question: How did the Victorians tackle the issue of poverty?