

Nursery Journey



Seasons and Autumnal Changes

Autumn

Explore environments and record experiences through simple drawings.



Explore natural materials.

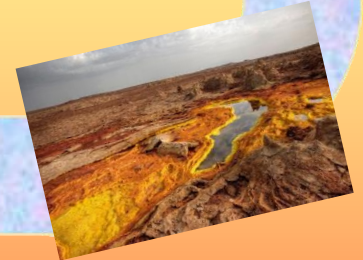


Spring

Changes from season to season.

Respect for the environment and living things.

Similarities and differences of hot and cold places.



Summer

Make comparisons between different story settings and their own environment.

Different countries or environments linked with personal experiences



Reception Journey



Seasonal observations.

Explore the school grounds. Follow simple directional instructions when walking a route.

Autumn

Seasonal change through images

Nature observations in the outdoor environment, explore seasons and weather.



Explore the natural world, making observations and drawing pictures of animals and plants.

Spring

Differences between the Arctic, Antarctic and Wakefield.

Physical environments of Kenya and Featherstone.



Summer

Find Featherstone All Saints CE Primary Academy and our local church on a simple map.

Recognise land and sea on a globe and map.

Locating places of interest on a map with support.



Year 1 Journey



Autumn

Global Study

Enquiry question: What is a map?



Spring

Local Study

Enquiry question: Where in the world are we?



Summer

Comparative Study

Enquiry question: What is Featherstone like compared to London?



Year 2 Journey

Autumn

Global Study

Enquiry question: Why are some places always hot and others always cold?



Spring

Global Study

Enquiry question: What are the similarities and differences between Scarborough and Nairobi?



Summer

Local Study

Enquiry question: Why are our bins a different colour?



Year 3 Journey



Autumn



Global Study

Enquiry question: Why on Earth do we have different climates?



Spring

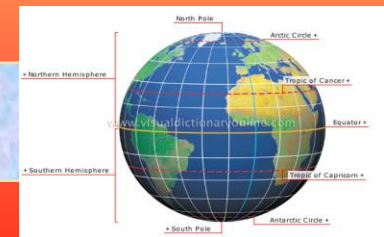


Global Study

Enquiry question: How do natural phenomena occur?



Summer



Global Study

Enquiry question: How can we use lines to divide the world?

Year 4 Journey

Autumn



Comparative Study

Enquiry question: Where would you rather live: Featherstone or Campana, Italy?

Spring



Local Study

Enquiry question: Where does our water come from?

Summer



Why We Need To
**SAVE THE
BEES**

Local and Global Study

Enquiry question: Why do bees matter?

Year 5 Journey



Autumn

Local Study

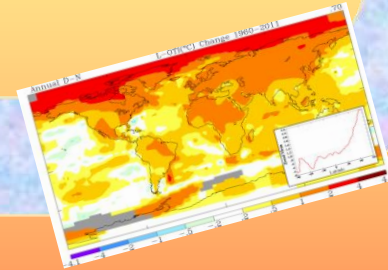
Enquiry question: What trees, plants and animals are in our local eco-system?



Spring

Comparative Study

Enquiry question: What will the arctic look like in the future?



Summer

Local Study

Enquiry question: What is The Rhubarb Triangle?



Year 6 Journey

Autumn



Comparative Study

Enquiry question: What are the similarities and differences between our region and North America?

Spring



Global Study

Enquiry question: Why are rainforests so important to our planet?

Summer



Local Comparative Study

Enquiry question: How has Featherstone changed in comparison to the East Coast?